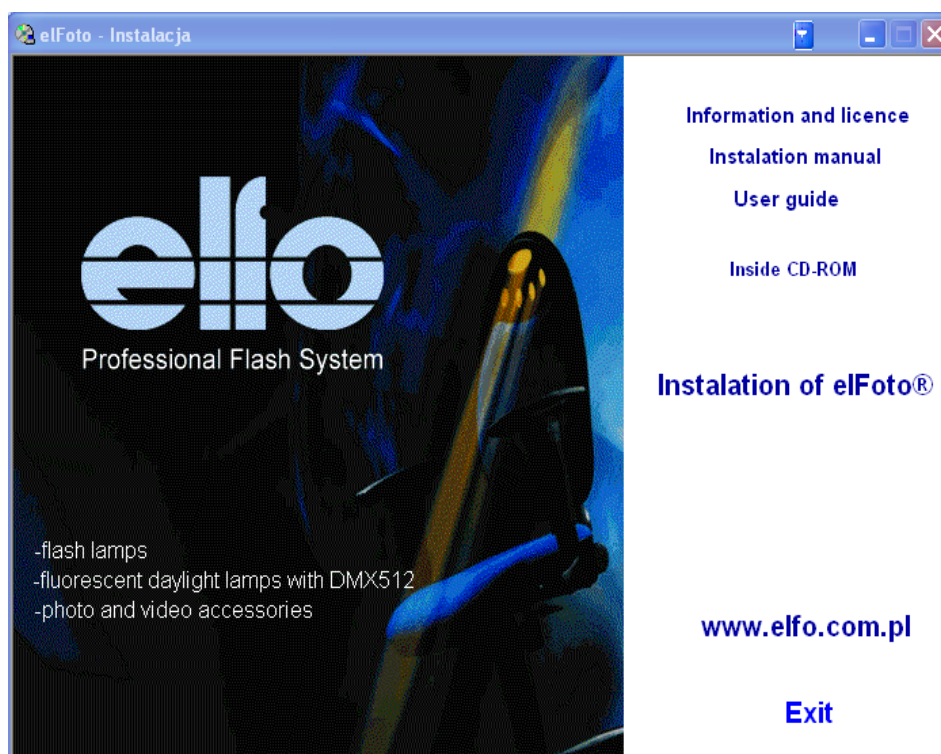
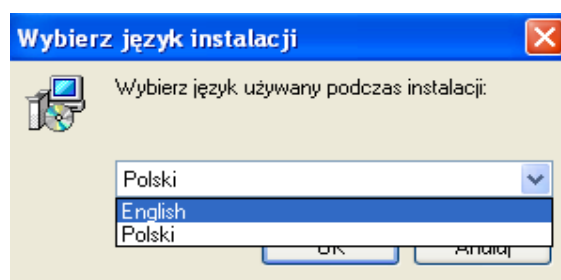


Instructions for Installing eFoto®

After autorun window appear



Press „Instalation of eFoto®” and select the language.

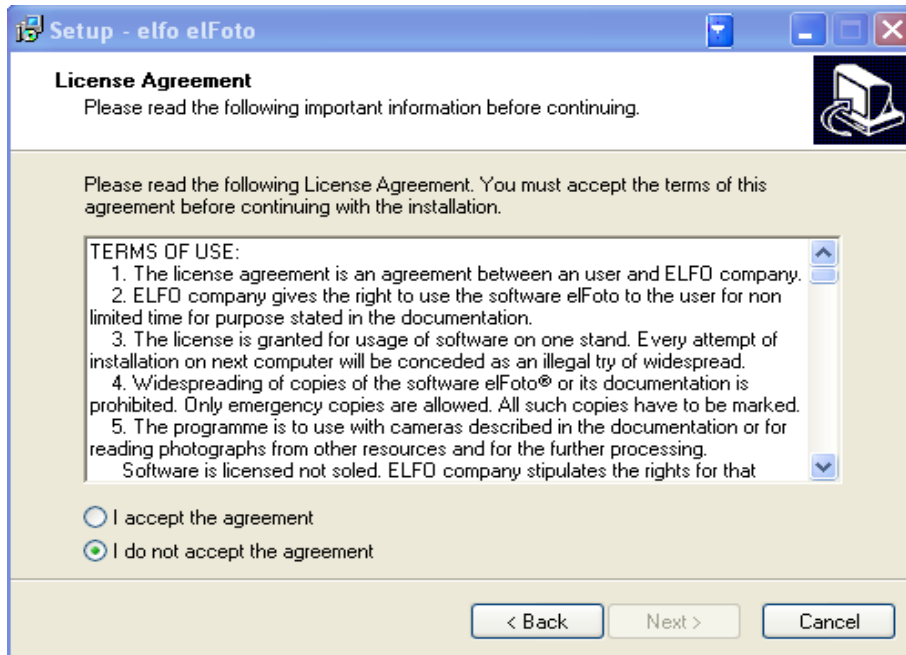


Start „setupeFoto.exe” a window of an installation creator will appear.



Press "NEXT" button to begin the installation. User must read carefully "LICENCE AGREEMENT" and check "I ACCEPT THE TERMS" box. If user does not accept the terms press "CANCEL". Partial or integral usage of programme requires acceptance of conditions of the agreement.

THE SAME EFFICIENCY HAS ACCEPTING THE CONDITIONS OF AN AGREEMENT AS THE PERSONALLY SIGNED AGREEMENT.



Press "NEXT" button it is analogous to acceptance of the terms of conditions. The agreement is cited below.

The software with enclosed documentation is owned by ELFO company and it is protected by copyrights policy.

Software and its documentation are nonmaterial good and they can not be copied, reprinted, distributed and changed to any other form without written permisson of ELFO.

System of taking digital photographs "eFoto® "

Notions:

eFoto® programme trade name with documentation enclosed, for taking photos for documents.

TERMS OF USE:

1. The license agreement is an agreement between an user and ELFO company.
2. ELFO company gives the right to use the software eFoto to the user for non limited time for purpose stated in the documentation.
3. The license is granted for usage of software on one stand. Every attempt of installation on next computer will be conceded as an illegal try of widespread.
4. Widespreading of copies of the software eFoto® or its documentation is prohibited. Only emergency copies are allowed. All such copies have to be marked.
5. The programme is to use with cameras described in the documentation or for reading photographs from other resources and for the further processing.
Software is licensed not soled. ELFO company stipulates the rights for that software.
ELFO gives the right of usage of the copy of the software only in connection with the devices.
6. You may not modify, copy, distribute, transmit, reproduce, publish, license, create derivative works from or transfer the software. User agrees that he/she will not decompile, reverse engineer or otherwise attempt to discover the source code of the software.
7. ELFO company permits to transfer the license and corelated with it programme rights on another user and installation of the programme on another computer under a term that all owned copies, actualizations or old versions of this software with its documentations and License Agreement. Such a transfer needs to be reported to ELFO company in order to get a new license key for a new user.
8. ELFO company guarantees that the provided carrier with the software is free from material and production defects.
9. After buying the programme but before the registration user can change his mind and return the product paying only the shipment cost. Not registered programme works adding to every photo an information about demo version.

10. ELFO company does not undertake any responsibility of any kind.
11. ELFO company does not undertake responsibility for any economical or data losses, work suspension or other consequences following usage of the product. Company does not guarantee that the functions included in the programme will fulfil all user's demands or that all defects discovered while exploitation will be deleted.
12. ELFO company will do its best to develop and modernize the software depended from law modification that regulate photographs parameters. Every perceived defect should be reported by the user to ELFO company for future actualisation.
13. With every software a serial number is enclosed which is necessary in registration process. Registration process of the eFoto® programme is described in the user guide.

While registration the programme is being connected to the user devices.

© ELFO® 2006

CONTACT:

ELFO® Jan Tulikowski

91-495 Łódź

Zgierska 231D

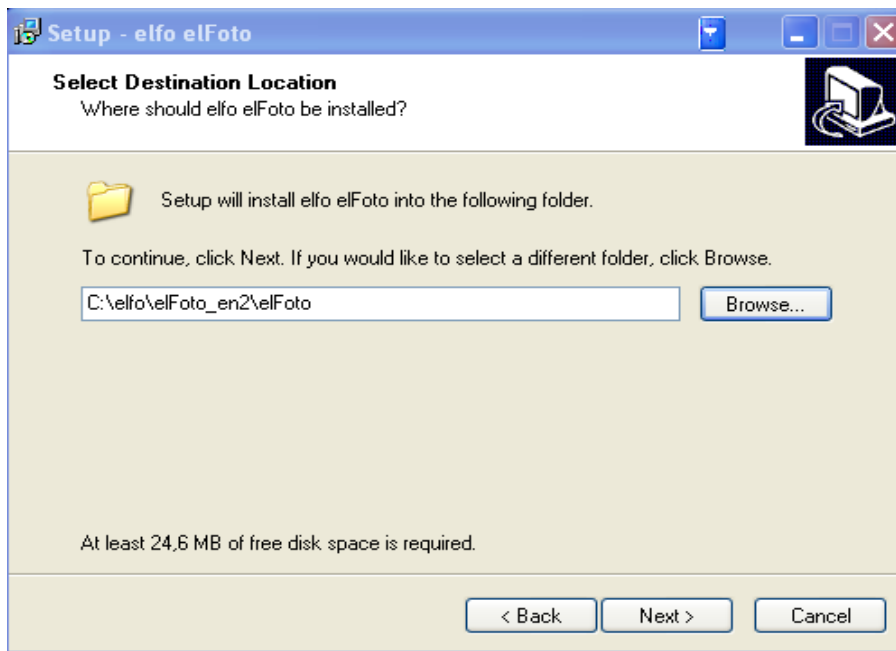
tel:+48 42 658 26 01, +48 42 658 83 44

fax:+48 42 658 81 56

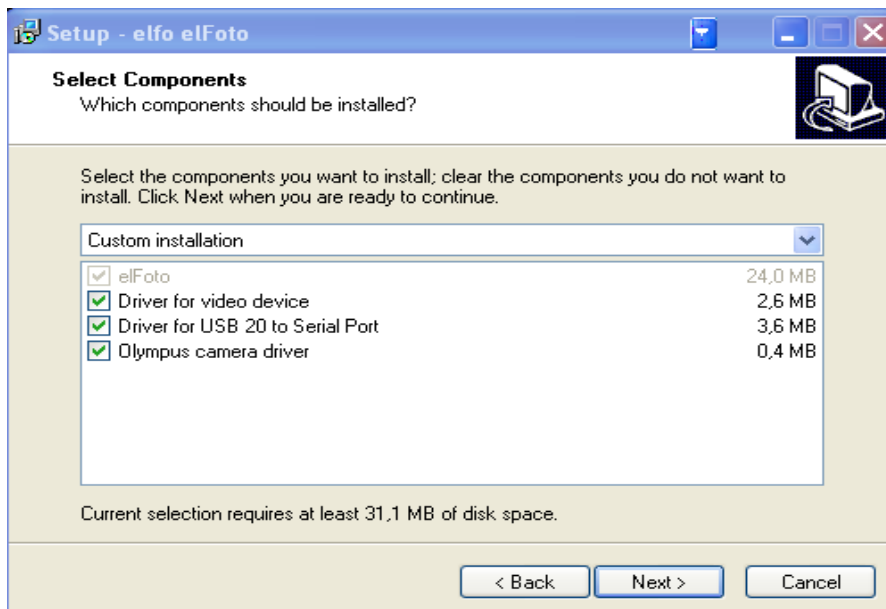
www.elfo.com.pl

e-mail: michallm@elfo.com.pl

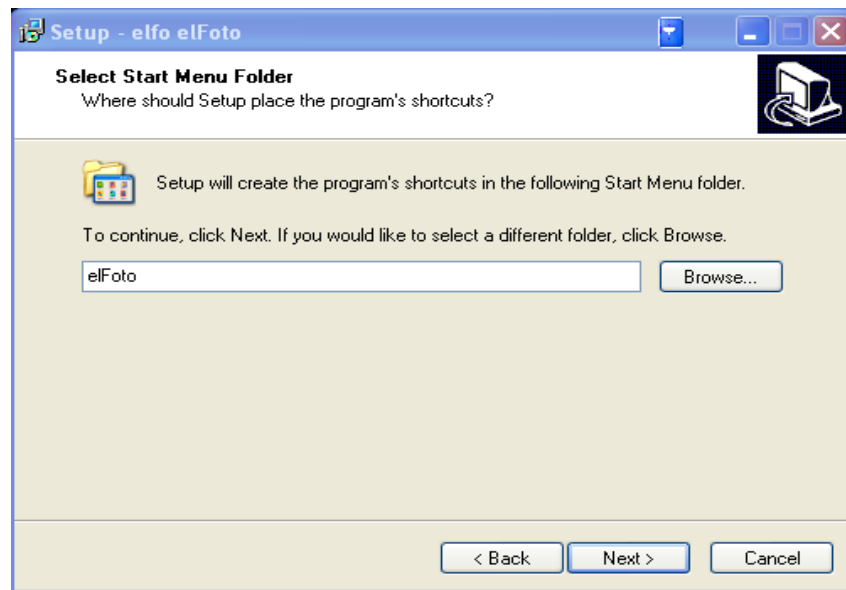
Window showed below makes it possible to choose the directory in which the programme will be installed. By default its a directory on disk C. Press “VIEW” to change the default directory.



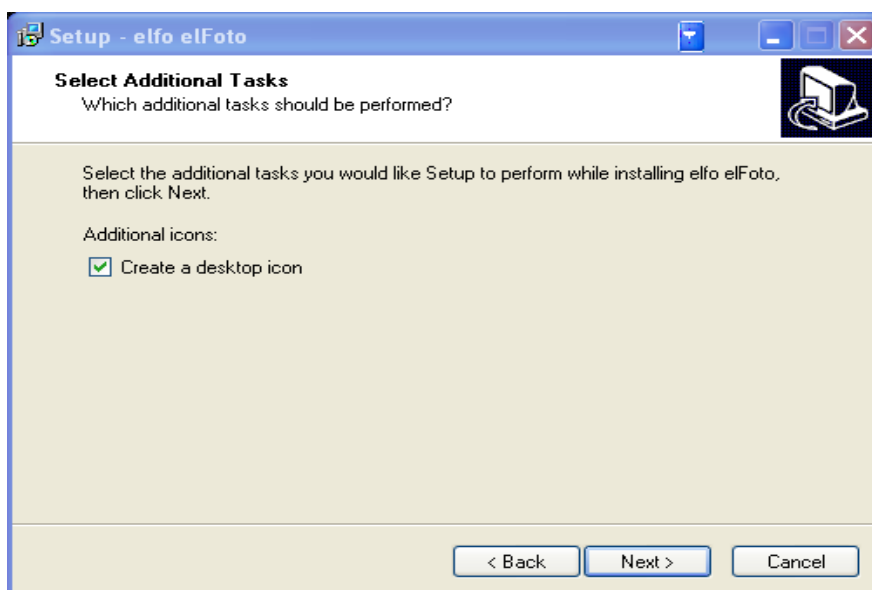
After acceptance an information window will appear showing what elements are to be installed and how much free space do they need.



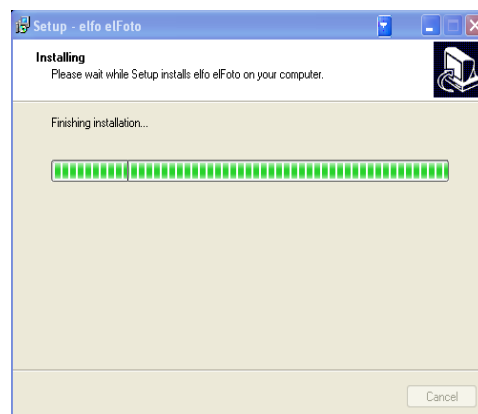
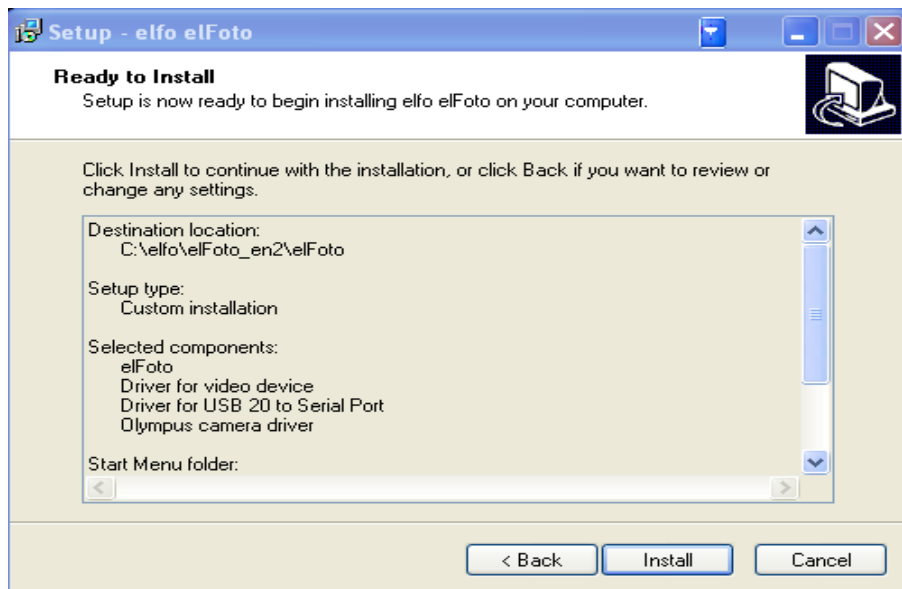
In next window user can choose a destination for shortcuts to the programme. Creator offers all destinations by default so if there are no opposes it is more comfortable to accept it.



Last stage of gathering informations by the creator is asking for placing a desktop shortcut. By default box is checked.

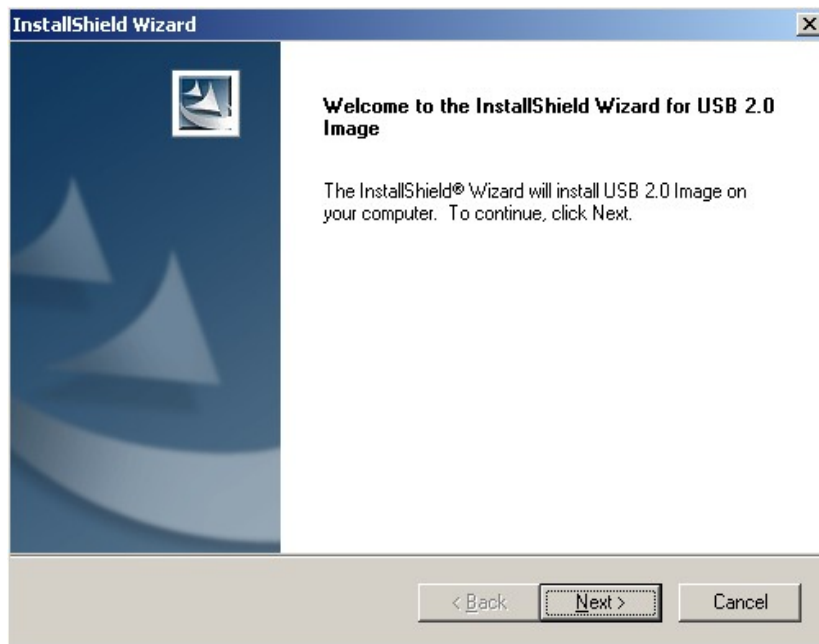


Window below displays gathered informations. One should check data propriety and and press "INSTALL" button if everything is corect.

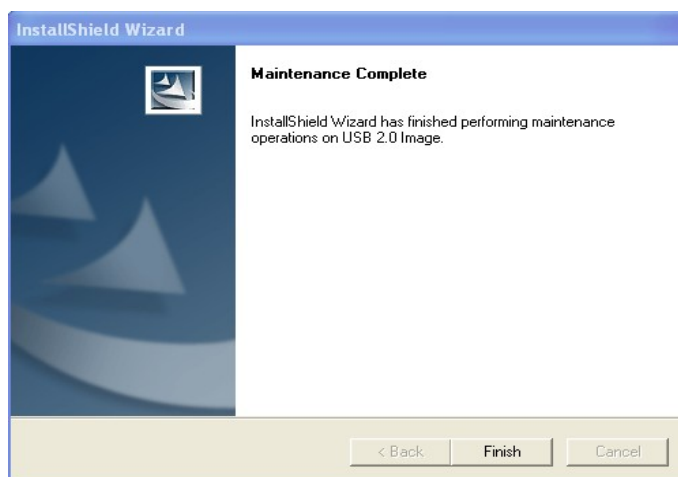


Installation begins. During this process several windows (listed below) will appear. They will contain informations about installation progress.

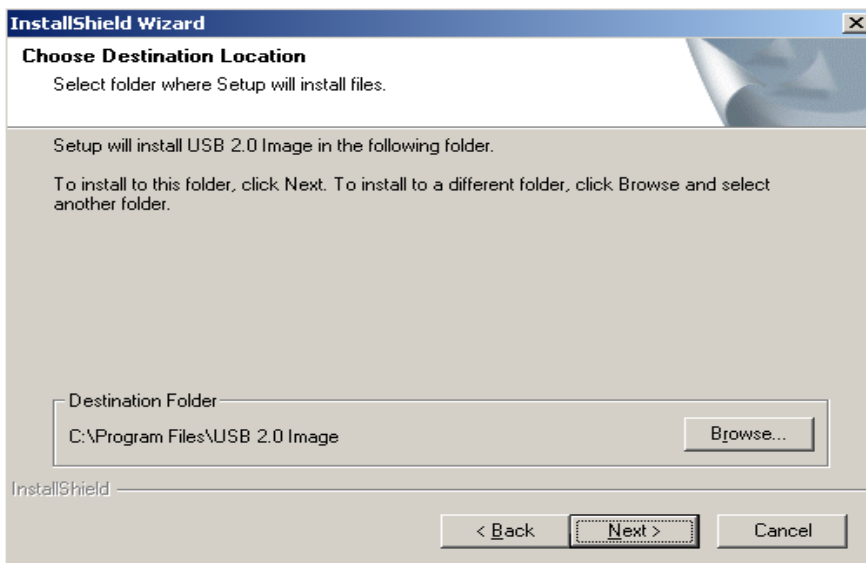
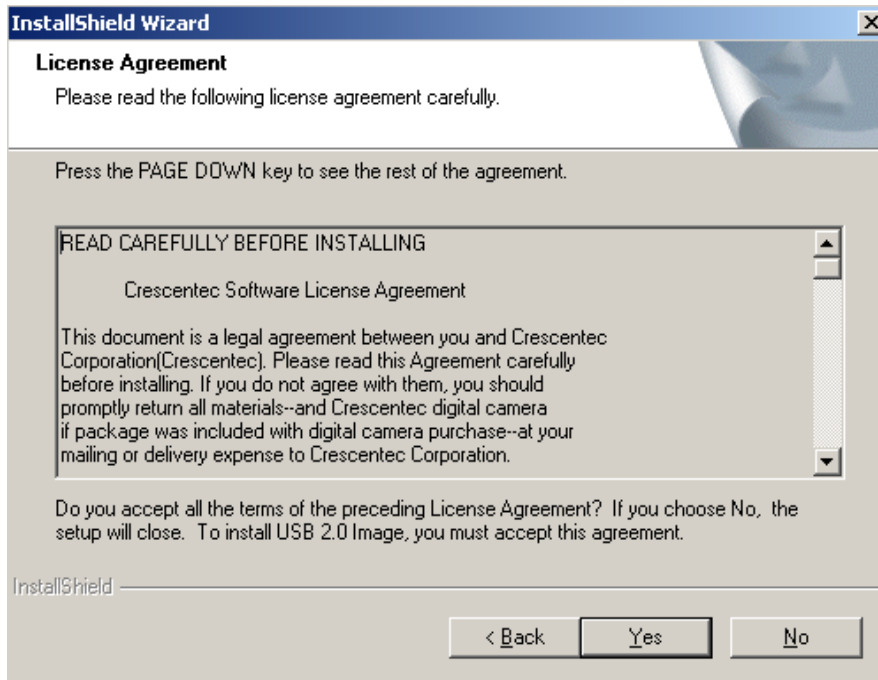
Press “NEXT” or “YES” to go further with installation. Software for external devices using USB 2.0 ports (grabber, camera service), will be installed.



From now on camera with Video Capture Box(grabber Grand AV USB 2.0) can be connected to USB2.0.

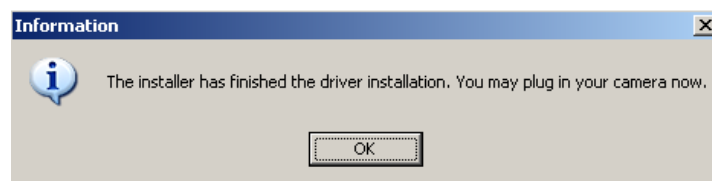
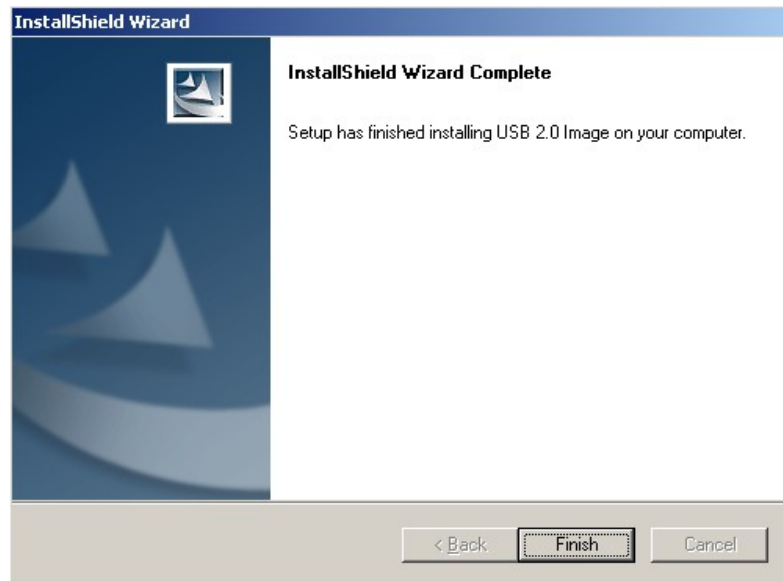


Second stage of the installation will begin. System has to sign devices to definite port. If the user changes the connection arrangement this stage will have to repeat. Best to agree with default settings.

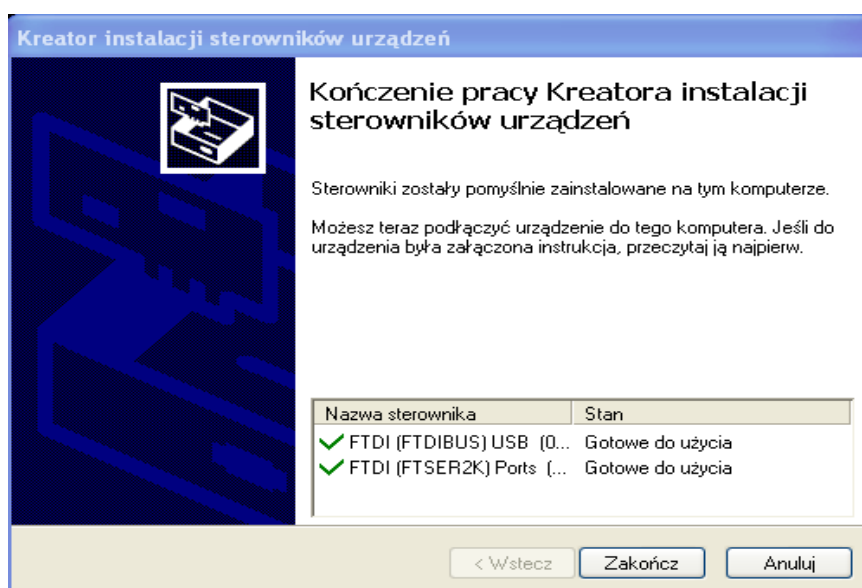


Warning:

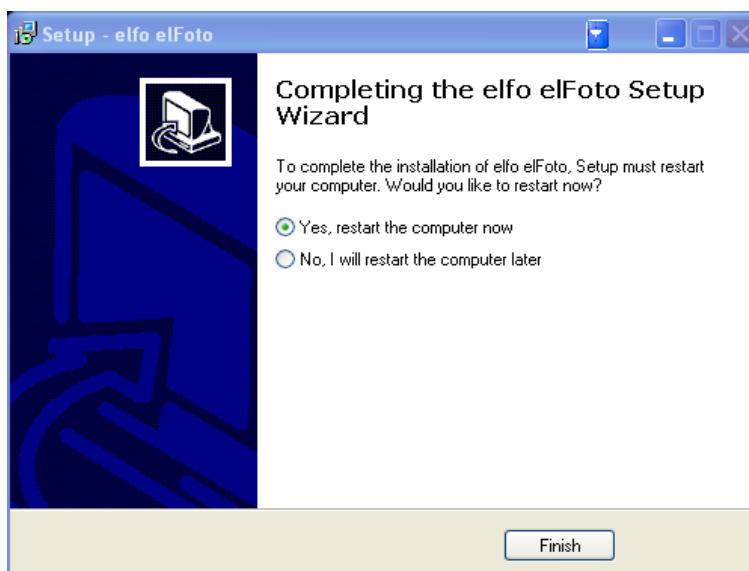
For faultless programme work it is necessary that the devices are connected to USB2.0 port



and the total length of the wire should be no longer than 5m. For further distances of camera from the devices use active USB 2.0.



Installation can be checked in DEVICE MENAGER. Onstalled and connected device will be visible in DISK STATION bookmark. (e.g. camera type. SP350). Grabberk „Crescentec DC-1100” will be visible in a bookmark DEVICE FOR PHOTOGRAPING. To finish the installation restart the computer. Finally, a shortcut on the desktop will appear. Further steps in managing the programme are included in the USER GUIDE..



Equipment needs:

For best use of software computer has to include:

- Procesor Intel® Pentium® III lor higher, 800 MHz
- OS: Windows 2000 (SP4 or higher), or XP (SP2 or higher)
- 512MB RAM minimum; 1GB RAM or better
- 50 MB of free space on hard drive

-2x port USB 2.0

-DirectX 8.1, 9.0 ,...

-in order to use video strim the camera has to be connected through the grabber.

Composit video signal is changed to USB signal. Without grabber preview on the monitor, in real time is not possible.